



## Maintenance plan & warranty seal



**For safety and quality reasons, the following maintenance schedule must be observed. Failure to do so may result in death, serious injury or serious traffic accidents.**

## Maintenance plan & Guarantee for your safety

For safety reasons, the maintenance plan & guarantee must be followed. We have marked all crucial connections that we have determined with a Tamper-Evident Marker. These markings must therefore be checked according to the maintenance plan.

We do this to ensure that garages and persons do not tamper with our system without our or your knowledge. This prevents you or someone else from ending up in a dangerous situation. Always bring this to the attention of your garage. You must obtain written approval from your official Peheja dealer for breaking the markings by removing or moving parts.

The Peheja system is maintenance-sensitive and you must carefully follow the maintenance plan. If the maintenance plan and/or guarantee is not complied with, all guarantees, liability & claims on our system and company, in whatever form, will lapse.



Pos	Description	Qualif	Interval in km					3-4 year	5-8 year
			15.000-20.000	50.000-60.000	150.000-200.000	250.000-300.000			
1	Bolt connections*	F/T	Check						
2	Bolt connections*	T		Check			Check		
3	Function of the buzzer	F	Check						
4	Clutch Cable	M			Replace		Replace		
5	Brake Cable	M				Replace		Replace	
6	Accelerator Cable	F/T	Check					Replace	

Kwalificatie	Qualif	Omschrijving
	F	Driving school owner / Driving instructor
	T	Technical person / car garage
	M	Mechanic official Peheja dealer

\* See page Warranty seal

**If any markers are broken, please contact your Peheja dealer immediately for a control check.**



# Quality check Nm



To meet the quality requirements please check the Nm of the bolts and in the required configuration according to ISO Standard.

All nuts and bolts are produced in Europe according to the ISO Norm quality 8.8 .  
Tightening moments.

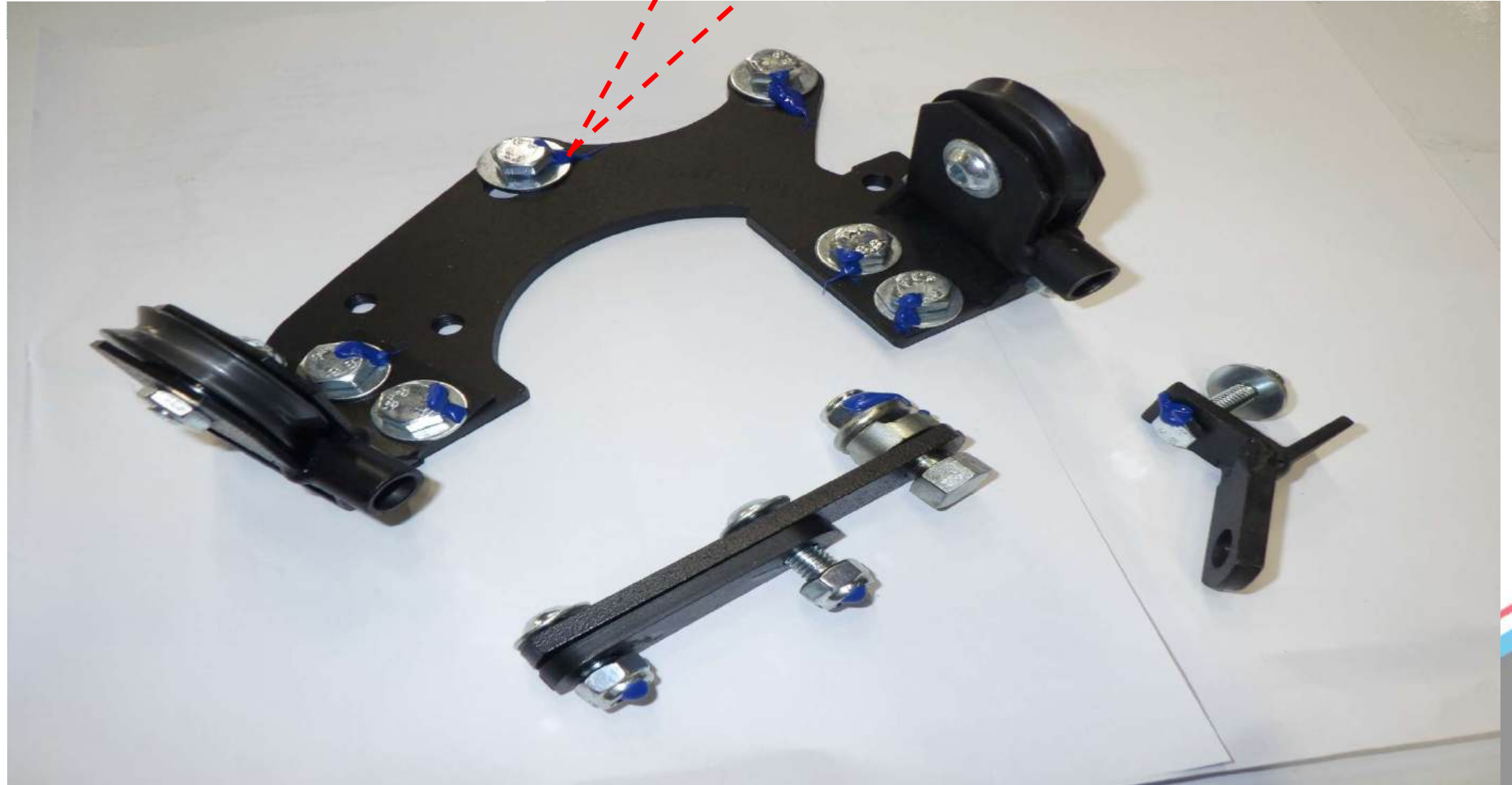
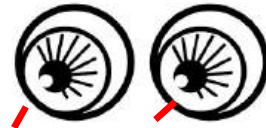
M3	/	1,3Nm
M4	/	2,9Nm
M5	/	5,7Nm
M6	/	9,9Nm
M8	/	22Nm
M10	/	46Nm

All critical connections determined by us will be marked by us with a Tamper-Evident Marker. These markings must therefore be checked according to the maintenance plan. If this marker is damaged and/or broken by loosening or shifting parts without our written approval and without our knowledge, all guarantees, liability & claims on our system and company, in whatever form, will lapse. This is therefore not up for discussion. In the attachment below you will find various marking points, for indication. The marking points vary per vehicle. **If any markers are broken, please contact your Peheja dealer immediately for a control check.**

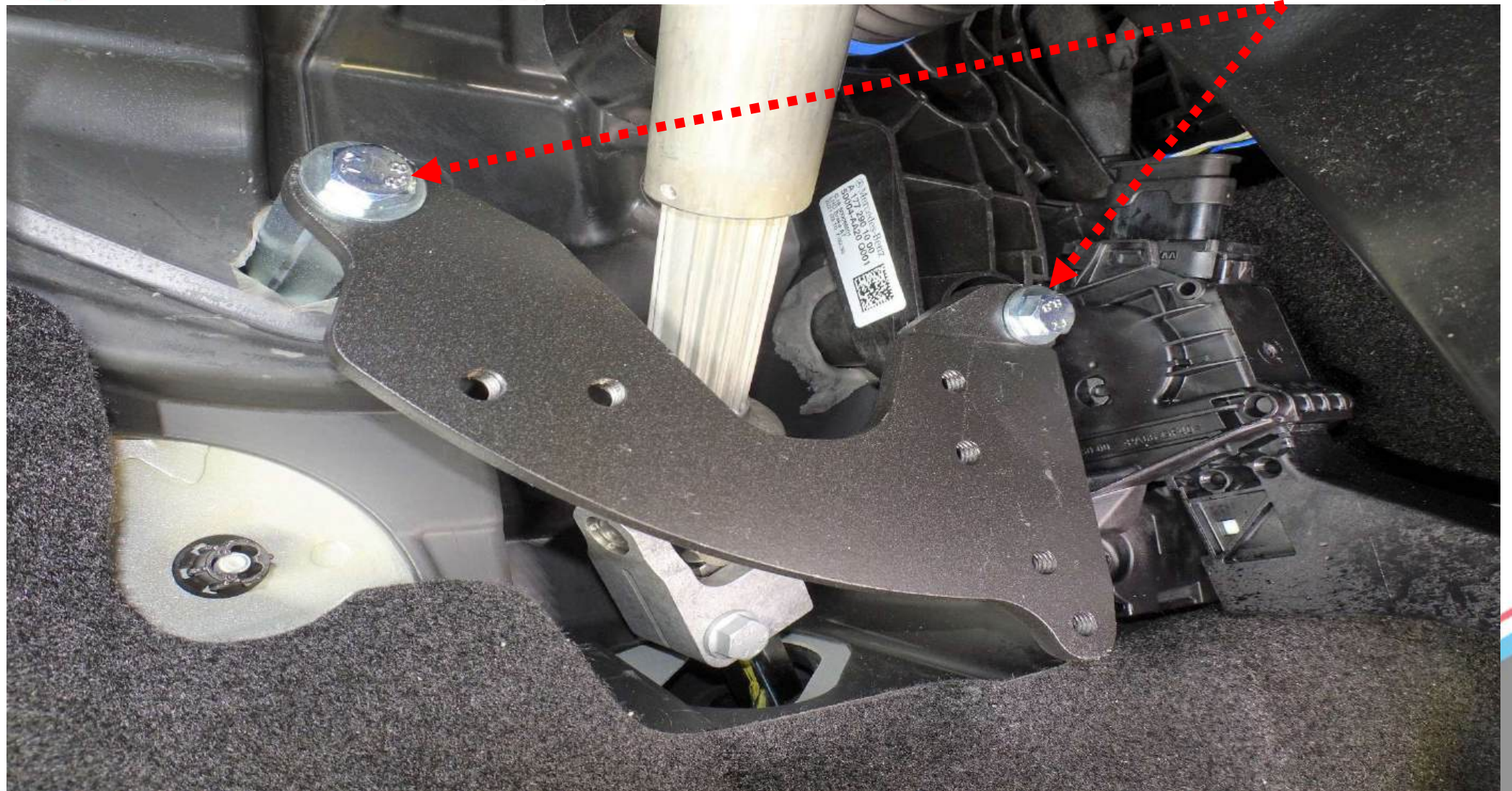




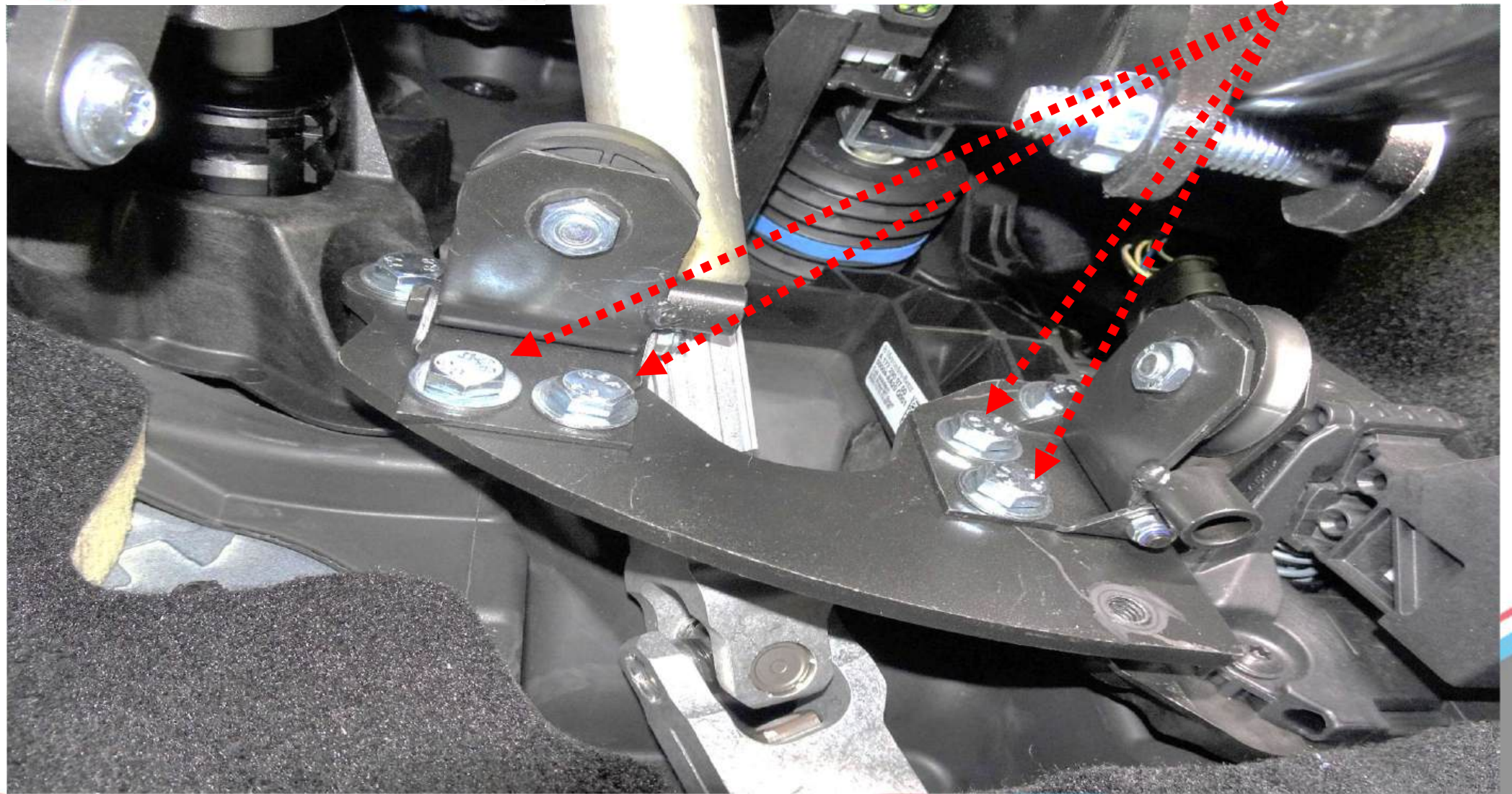
### Warranty seal



## Warranty seal

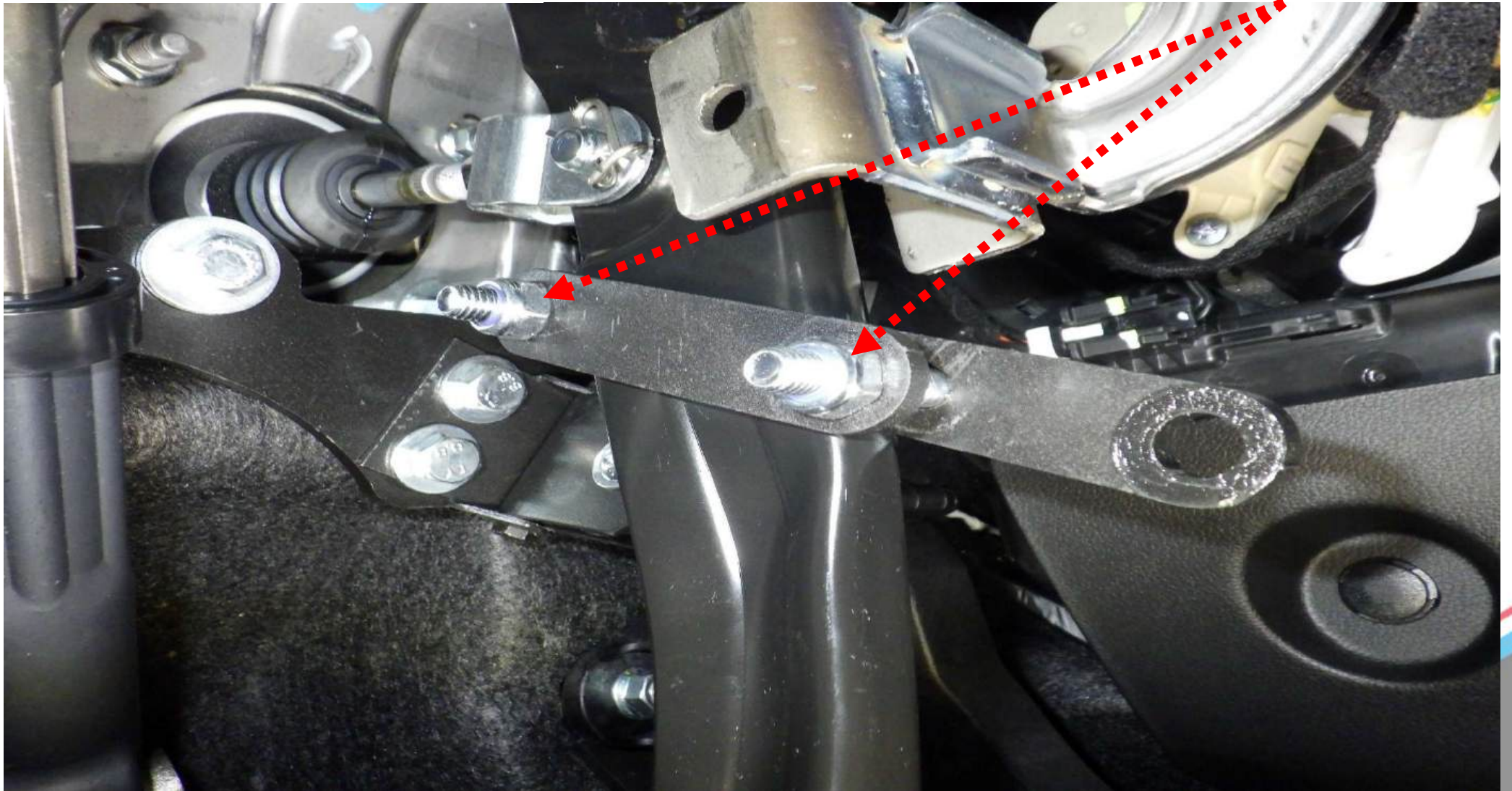


## Warranty seal





## Warranty seal



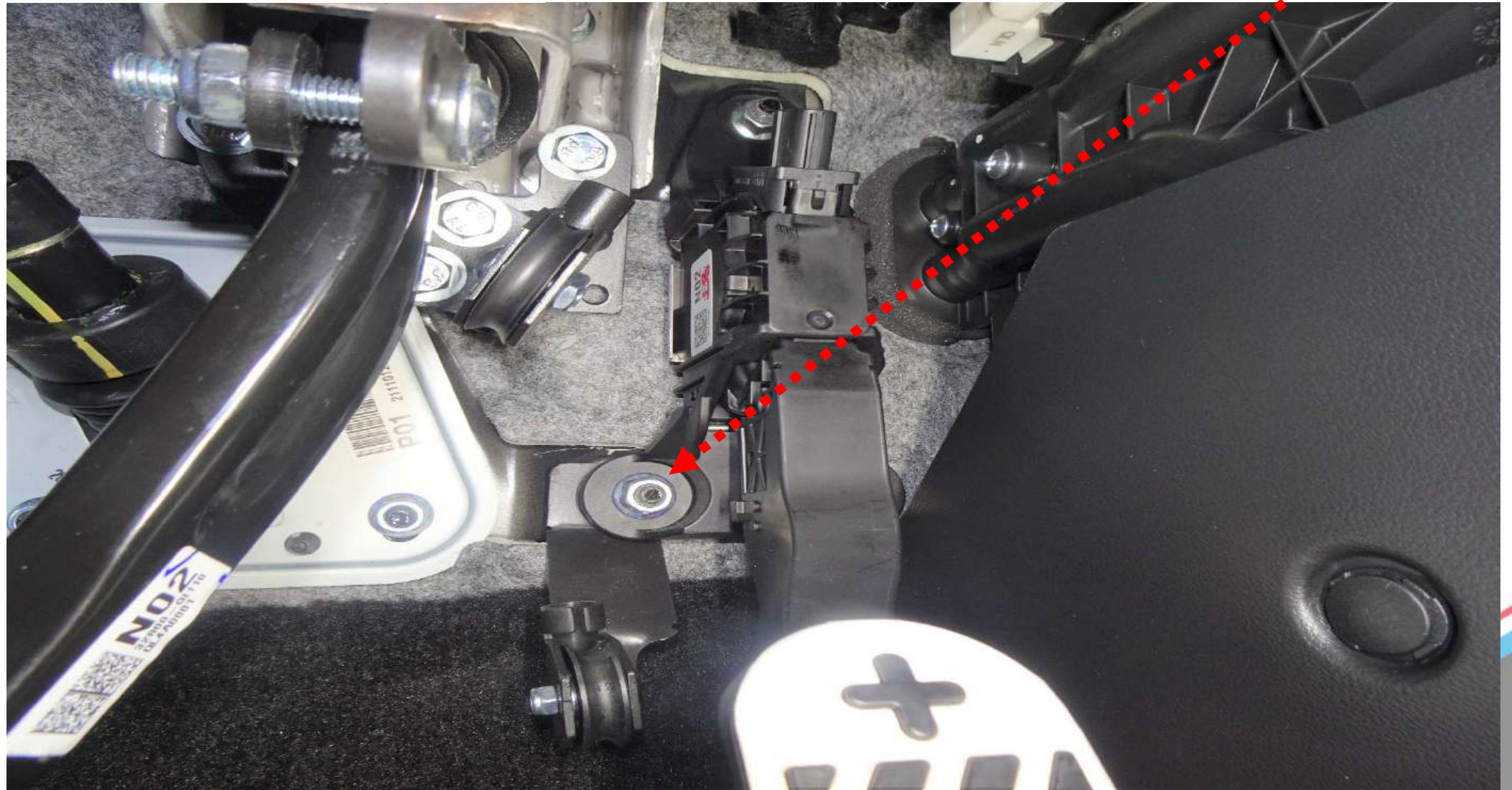
## Warranty seal



## Warranty seal



## Warranty seal



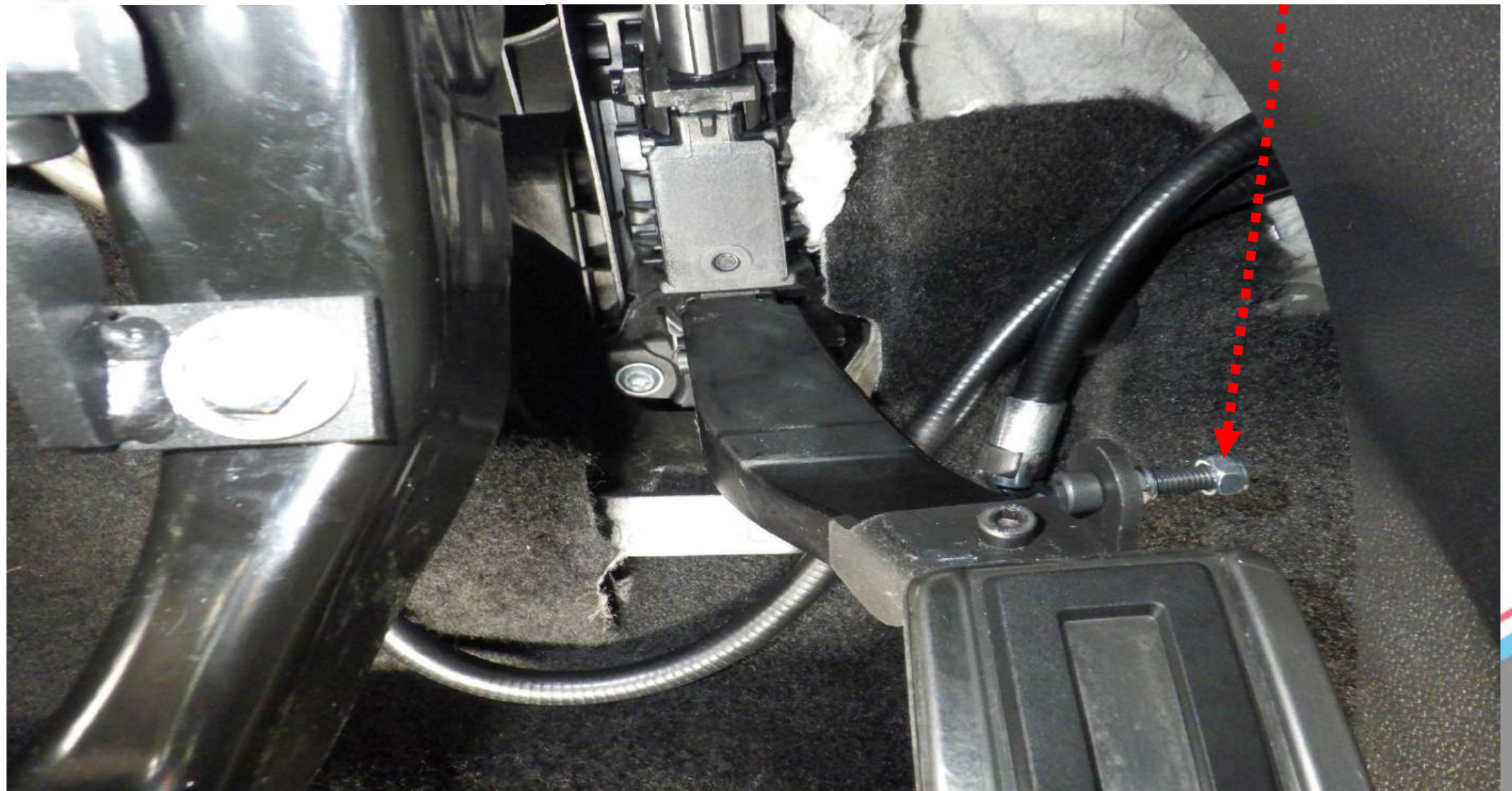
## Warranty seal



## Warranty seal



## Warranty seal



## Warranty seal



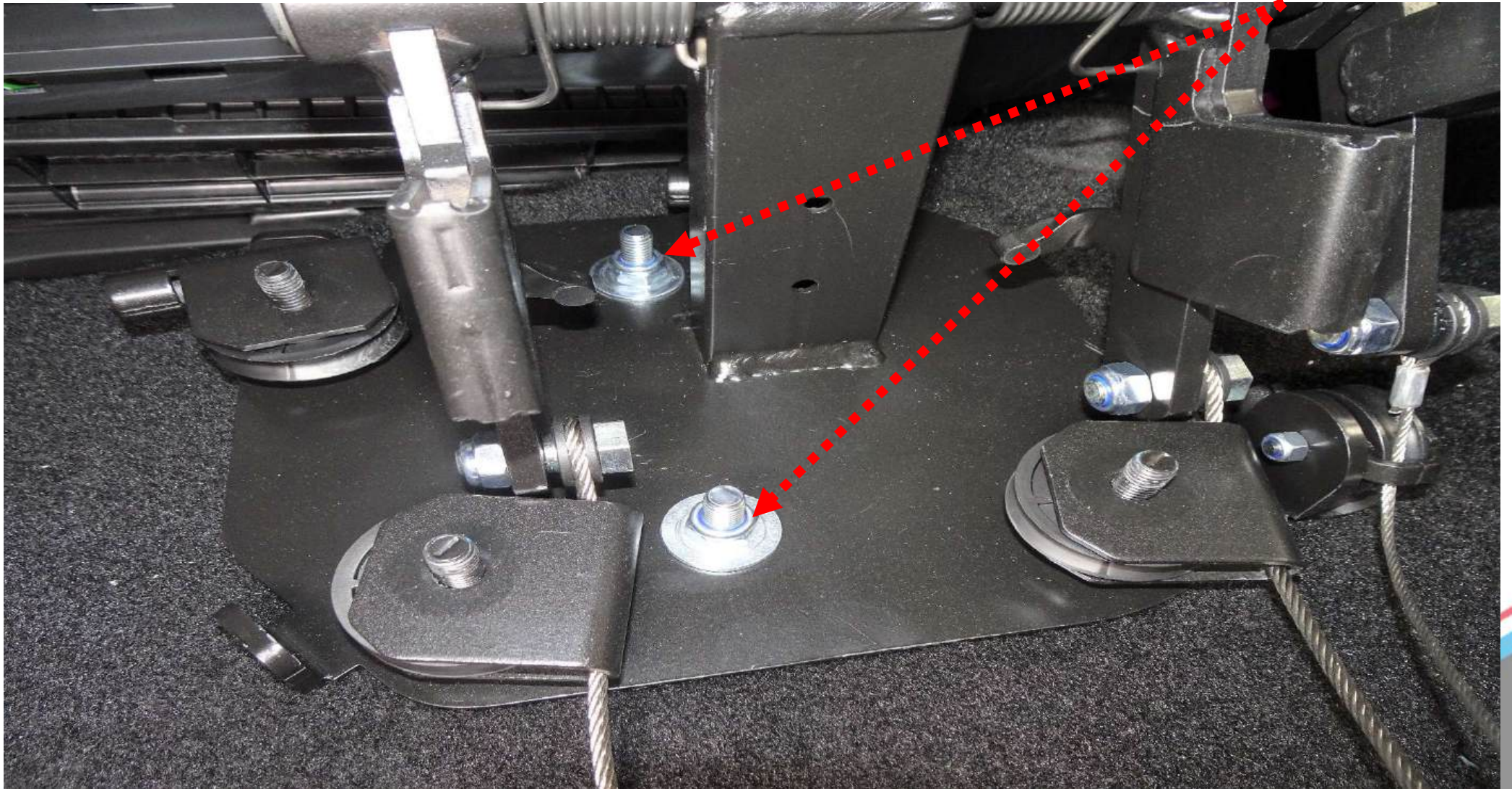


## Warranty seal

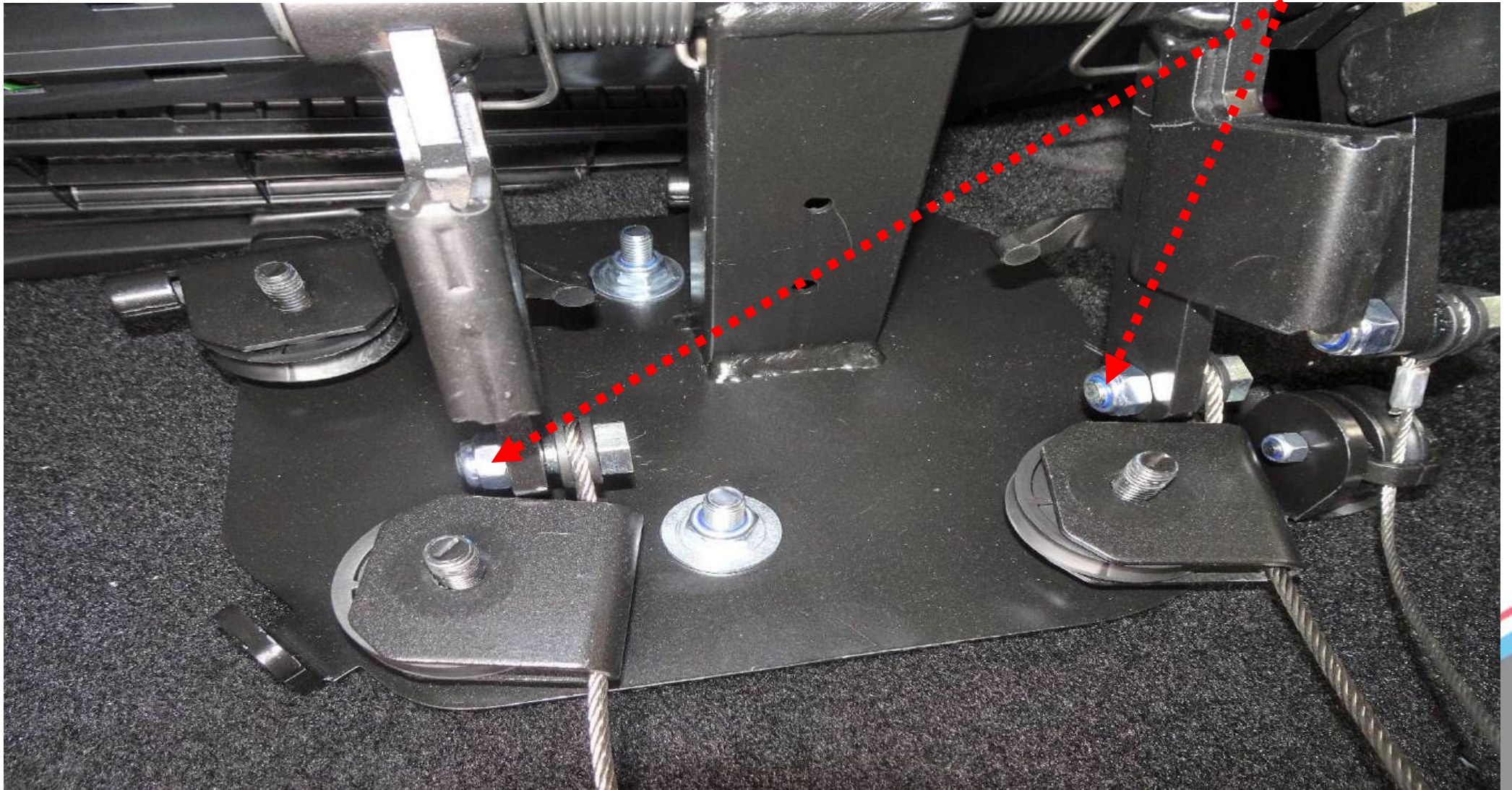




## Warranty seal



## Warranty seal



## Warranty seal



## Warranty seal

